

The logo features a stylized white sailboat icon at the top. Below it, the word "OHANIDA" is written in a white, serif, all-caps font. Underneath "OHANIDA", the word "ONE" is written in a much larger, white, bold, sans-serif font. At the bottom of the logo, the text "ZERO EMISSION TRANSOCEAN SEA LAB" is written in a smaller, white, sans-serif, all-caps font.

OHANIDA
ONE
ZERO EMISSION TRANSOCEAN SEA LAB

2013 RETHINKING OPEN HARDWARE
2014 CONCEPT ART – THINKING BIGGER
2015 COLLABORATION AS THE CORE
2016 TIME FOR THE PILOT

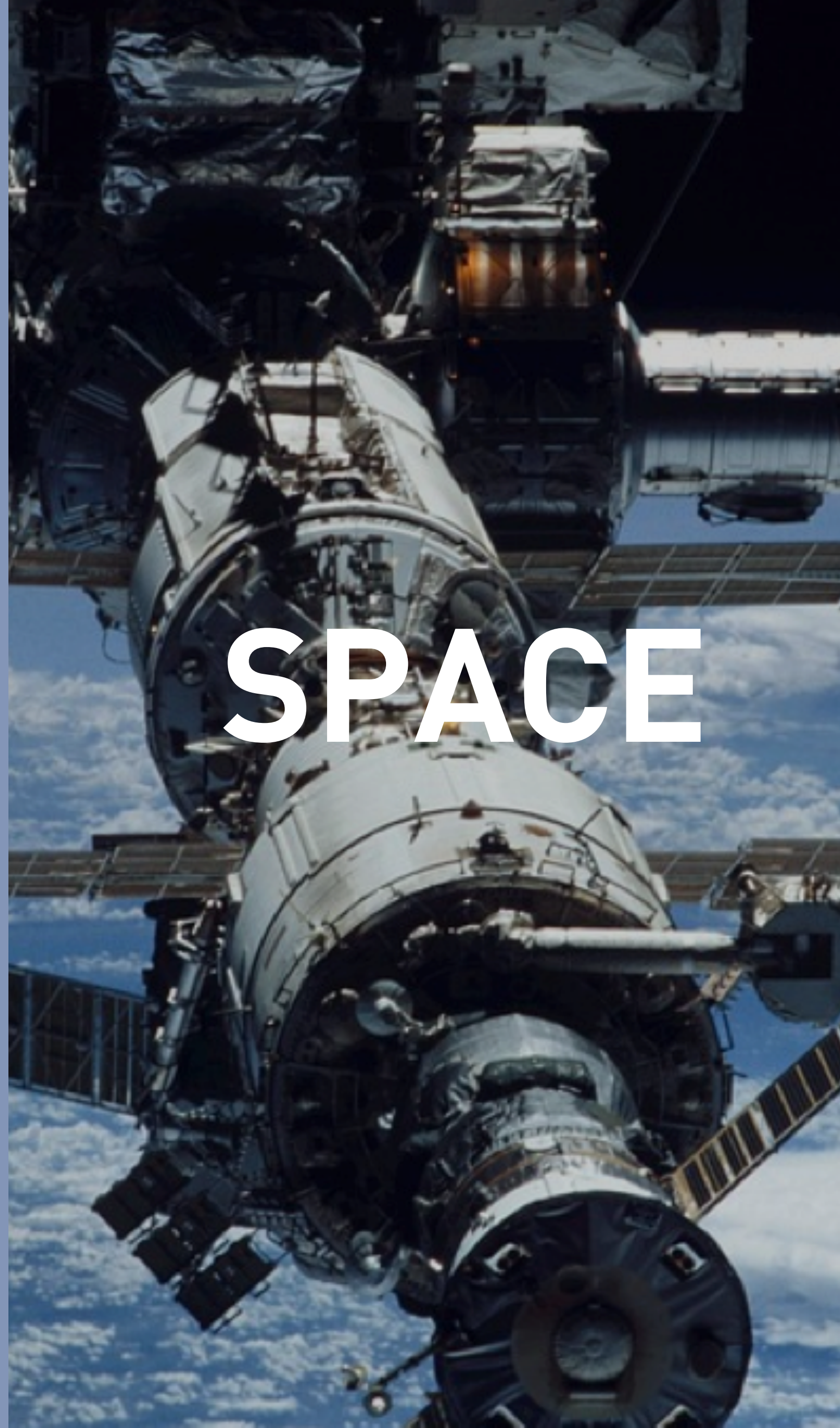
TRULY
INTERNATIONAL
CRISS/CROSS DISCIPLINARY ART+SCIENCE
SAFE HAVENS
FOR CELEBRATION AND FOSTERING OF
CURIOSITY?



LAND



SEA?



SPACE

Ohanda One – Fundamentals

- the journey — not the destination
- zero emission as the common goal
- meta theme #1 : collaboration → documentation
- meta theme #2 : vessel improvement → prototyping
- 100% time : research, prototype, cook, procrastinate – together
- open source sw/hw, open formats, open data

120

CREW 10 + TEAM 110

- VESSEL CREW
- CO-WORK FACILITATOR
- FOOD FACILITATOR
- FABLAB FACILITATOR
- IT FACILITATOR

ZERO

"PASSENGER" - ALL ENGAGED

COLLABORATION

ZERO EMISSION

**FLETTNER-ROTOR
BIOWASTE
SOLAR
NEXT THING ++**

META AGENDA: OHANDA ONE CONCEPT & SUSTAINABILITY IMPROVEMENT

- BOOK INSTEAD OF A SMALL CONFERENCE
 - BOOK FOR A LARGE COMPANY R&D TEAM
 - BOOK FOR A SMALL TEAM AMONG SIMILAR
 - APPLY FOR A RESIDENCY
-

**#NOMORE POINTLESS FLIGHTS
#NOMORE POINTLESS HOTELS
#GONEFISHING**



BALTIC



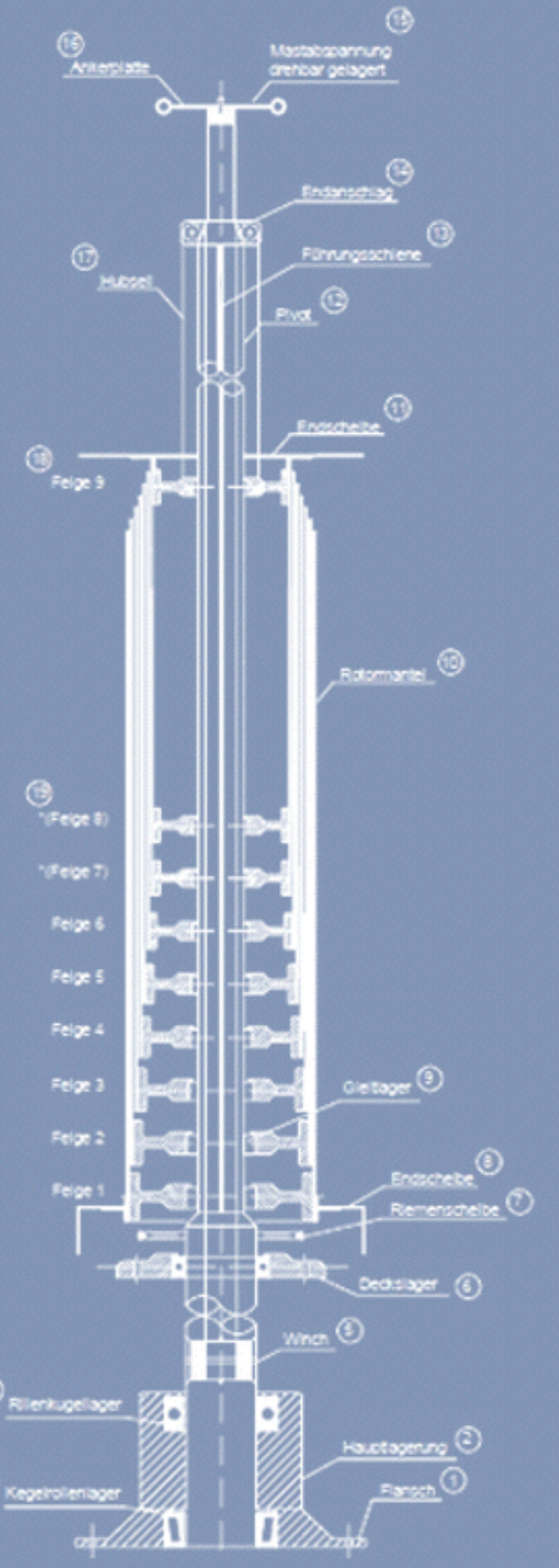
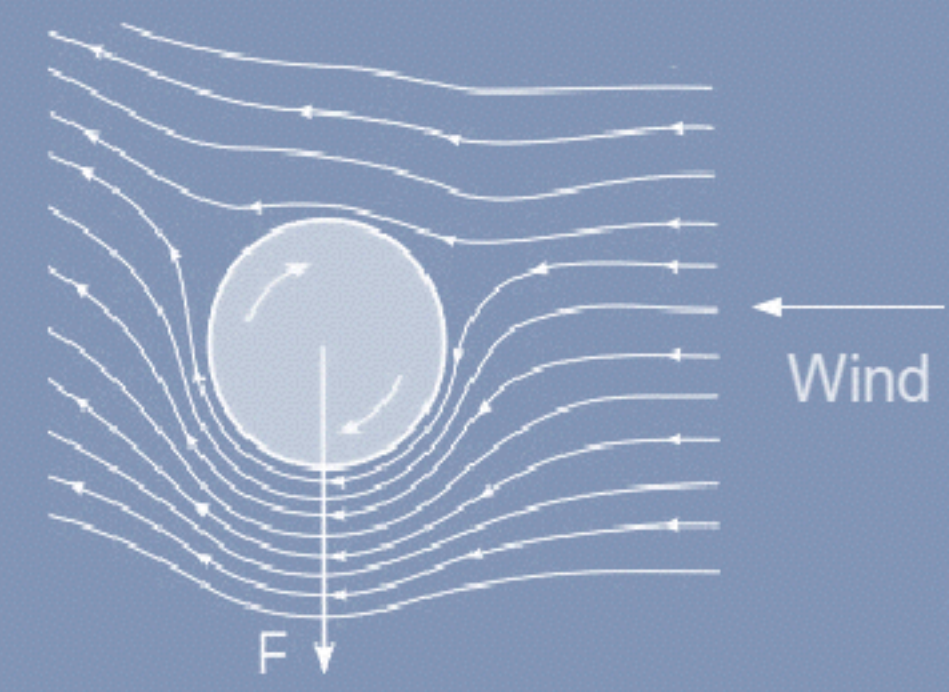
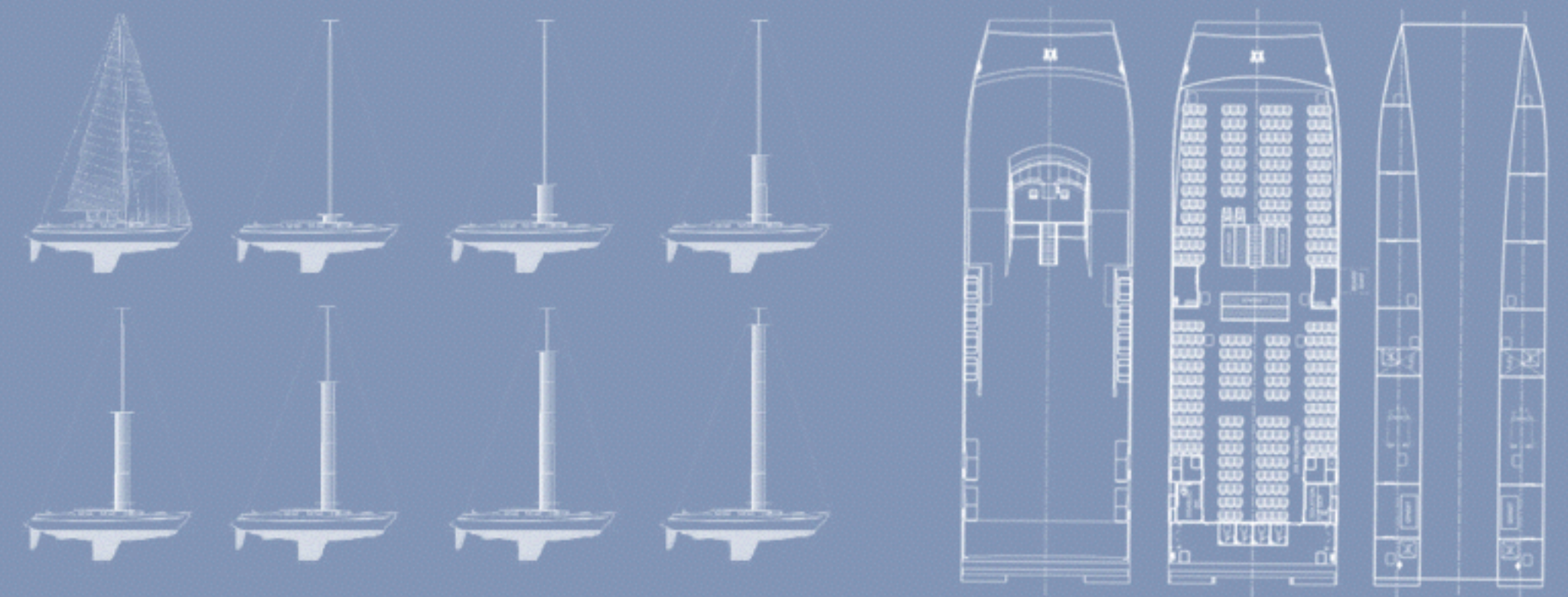
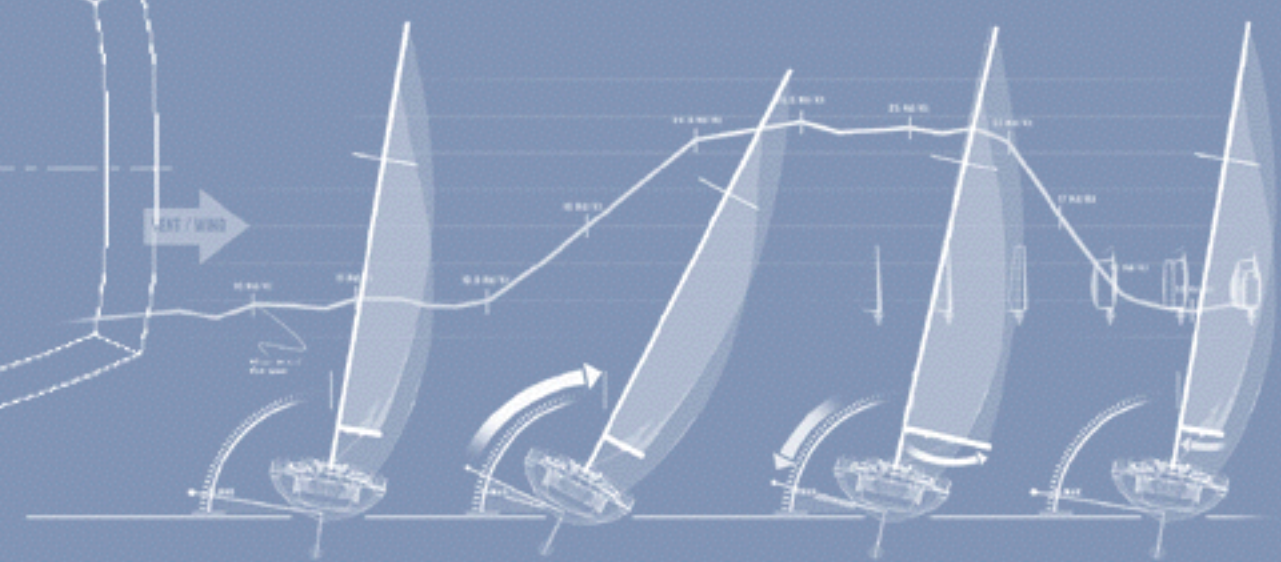
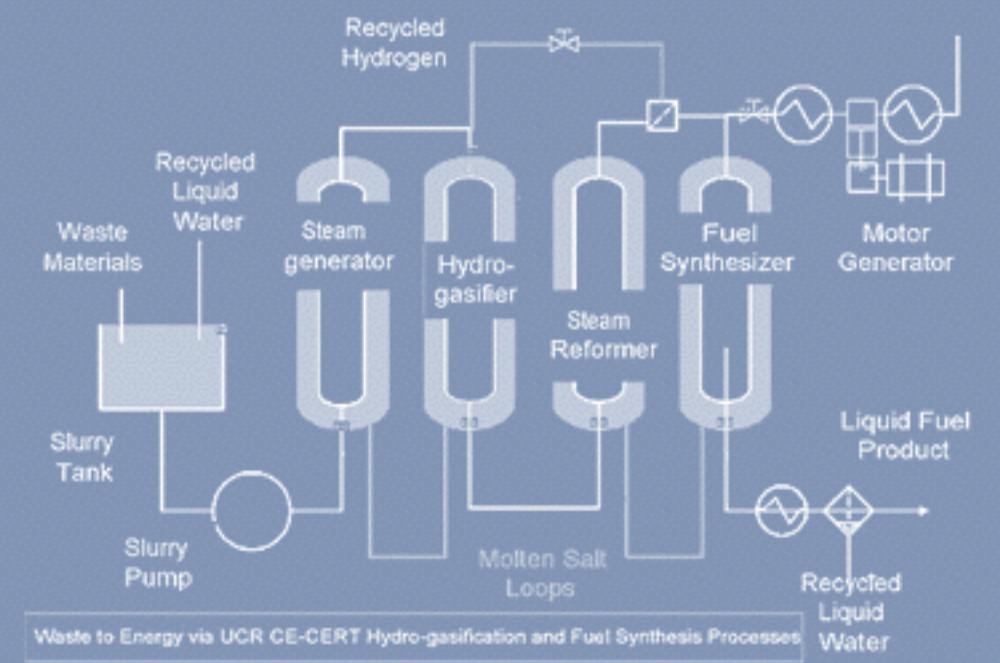
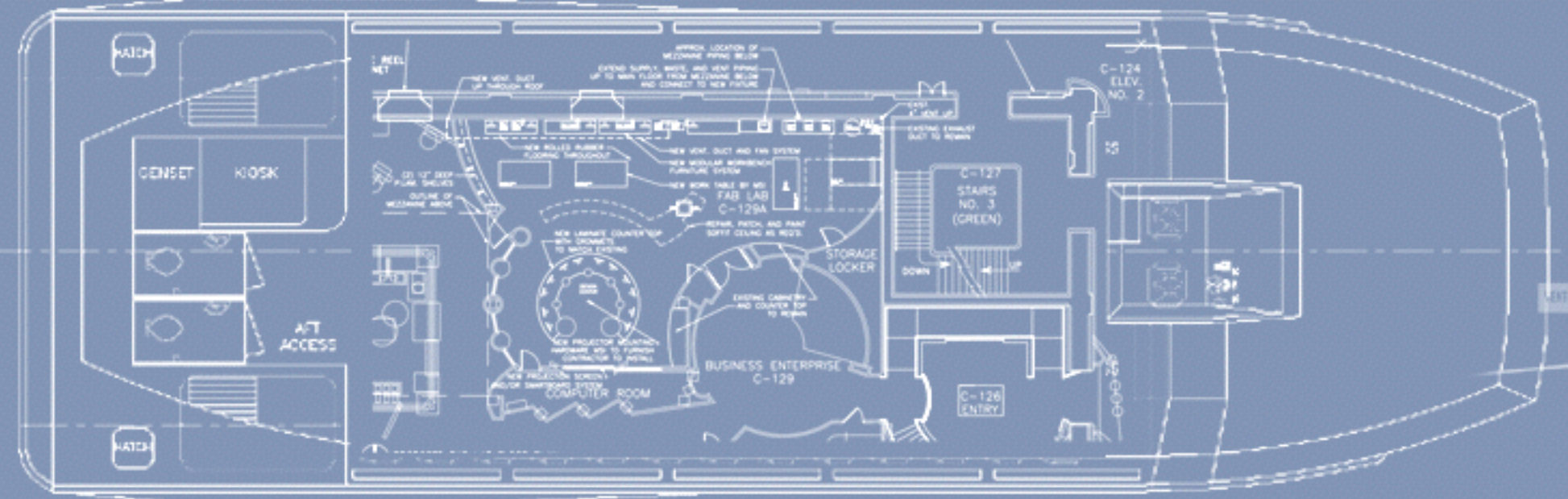
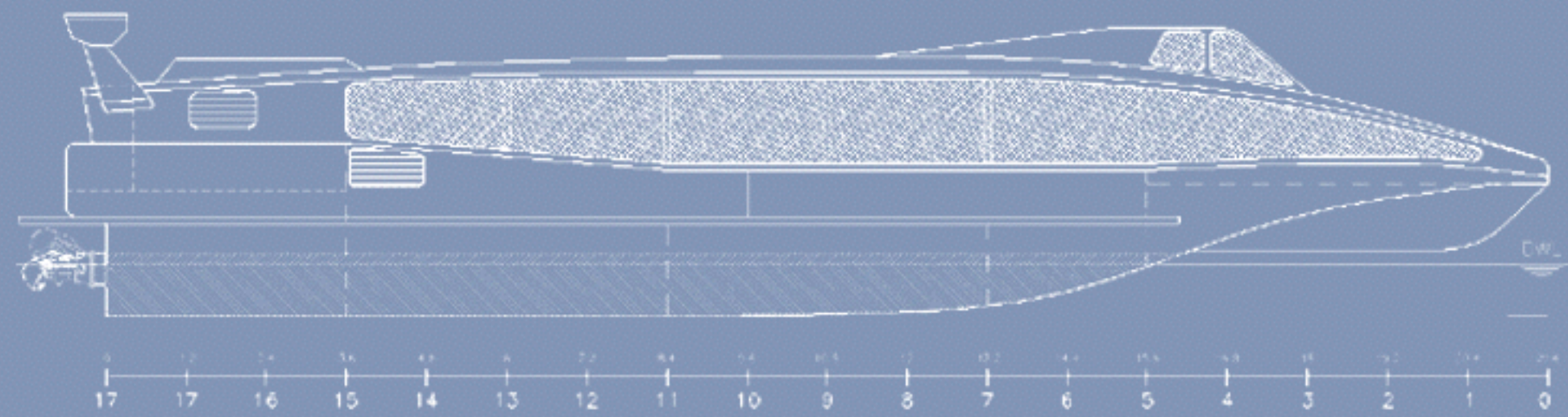
MED



WEST COAST



CHINA SEA





OHANDA
ONE
ZERO EMISSION TRANSOCEAN SEA LAB

CURIOUS? → JOIN-IN FOR CREW #01

OHANDA.ONE